



ABOUT US

North West Commercial Industries, specialises in Ceilings and Partitions, Carpentry & Fit-out. NWCI has completed projects for Australia's largest Builders maintaining and enhancing our position as a trusted and respected name in the Construction Industry.

Over a 17-year period we have established a name amongst the major builders for being the go to company for driving a project to a successful conclusion. As we are a key component in the construction process, we

can influence and drive the services contractors, and assist the builder in achieving his programme goals.

Differentiators

We have successfully delivered contracts ranging from \$100 thousand to \$25 million in value with our supply chain partners assisting us with meeting our goals:

- Healthcare – Hospitals and Aged Care
- Multi-unit Residential – Student accommodation, Low & High-rise Apartments
- Retail & Hospitality – Shopping centers, retail fit-out's
- Education – Schools, Universities, TAFE
- Government – Defense, Correctional facilities, Transport, Offices
- Institutions – Airport facilities, Rail buildings, Offices

Our Vision

Our vision is to be a leading contractor in our field for innovative, results driven and cost-effective ceilings & partitions, carpentry, & fit-out services in Australia.

Our Mission

NWCI aim to achieve our vision of service satisfaction to our customers through innovation, proactive management and quality of workmanship.

NWCI aim to influence our customers sufficiently to secure and maintain long term relationships

NWCI aim to utilise the technology available to us to continuously improve our service

SPECIALITY

- Metal stud framing
- Plasterboard
- Carpentry
- Fire rating systems
- Acoustic systems
- Exposed & concealed grid ceiling systems
- Insulation
- Bulkheads & coffer ceilings
- Plywood & MDF
- Specialist wall & ceiling panels
- Aluminium cladding
- Pressed metal door frames
- Fibre-cement sheeting & more.

COMPLIANCE

- AS/4801:2001
- ISO 9001:2015
- ISO 14001:2015
- WHS Act 2011
- WHS Regulation 2011

Contact Name: Julian Stewart
Title: General Manager
Phone: (07) 5806 1004
Mobile: 0413 158 067
Email: Julian@nwciquld.com

www.nwciquld.com

Corporate Office
3/45 Commercial Drive
Shailer Park
Brisbane QLD 4128

Far North Queensland:

Phone: 07 4056 6980

Past Performance

NWCI continually works for award winning builders, successfully being able to meet the changing demands of an evolving building industry, which has resulted in NWCI becoming one of the largest and most versatile contracting lining, carpentry, and fit-out companies in Australia.




Client Name	About Client	Project
	ICON Construction is a major builder in the Australian marketplace.	Buranda TOD Stage 1 NWCI was engaged by ICON Co to complete the interior linings & carpentry package for 1,160 student accommodation rooms including associated facilities.
	Broad Construction is a major builder and part of the CPB Contracting Group	Brisbane State High School NWCI was engaged by Broad to complete the ceilings & partition package on the Brisbane State High School.
	Hindmarsh is a major builder and developer in Australia.	Scape Apartments NWCI was engaged by Hindmarsh to complete the interior linings & carpentry package for 620 student accommodation rooms including associated facilities.
	Hutchinson Builders is a major builder in Australia.	Bushland Beach Stage 2 Shopping Centre NWCI was engaged by Hutchinson Builders to complete the ceilings & partition package for the Bushlands Beach Shopping Centre
	Mettle Projects is a professional new build, fit-out & refurbishment contractor servicing the east coast of Australia.	Valley Hart NWCI was engaged by Mettle Projects to complete the ceilings & partition office refurbishment & fit-out package.
	FDC specializes in fit out works and construction services across Australia.	BHP IROC NWCI were engaged to undertake the ceilings and partitions works for a prestigious Client.
	Built are a major builder and fit-out contractor in Australia.	Blue Sky NWCI were engaged to undertake the ceilings, partitions and carpentry works for 634 student accommodation rooms and associated facilities.

Product Suppliers

We source all materials used on our projects from the leading manufacturers and suppliers in Australia.

The materials used on site will come with a fully backed manufacturer's warranty.

All materials we be installed in accordance with the manufacturer's recommendations.

Supplier Name	About Supplier	Products
	Rondo is the leading manufacturer and supplier of wall and ceiling systems, along with complementary accessories, to the building industry	Steel stud & track, ceiling systems, access panels, acoustic assemblies & more.
	Boral is a focused International Building & Construction materials supplier	Plasterboard, joint compounds, adhesives, & cornice
	Bradford Insulation, a CSR company, is Australia's leading supplier of insulation, acoustic control & energy saving products for the building industry.	Range of fibre-glass & polyester insulation

Associations

NWCI are members of the following organizations:



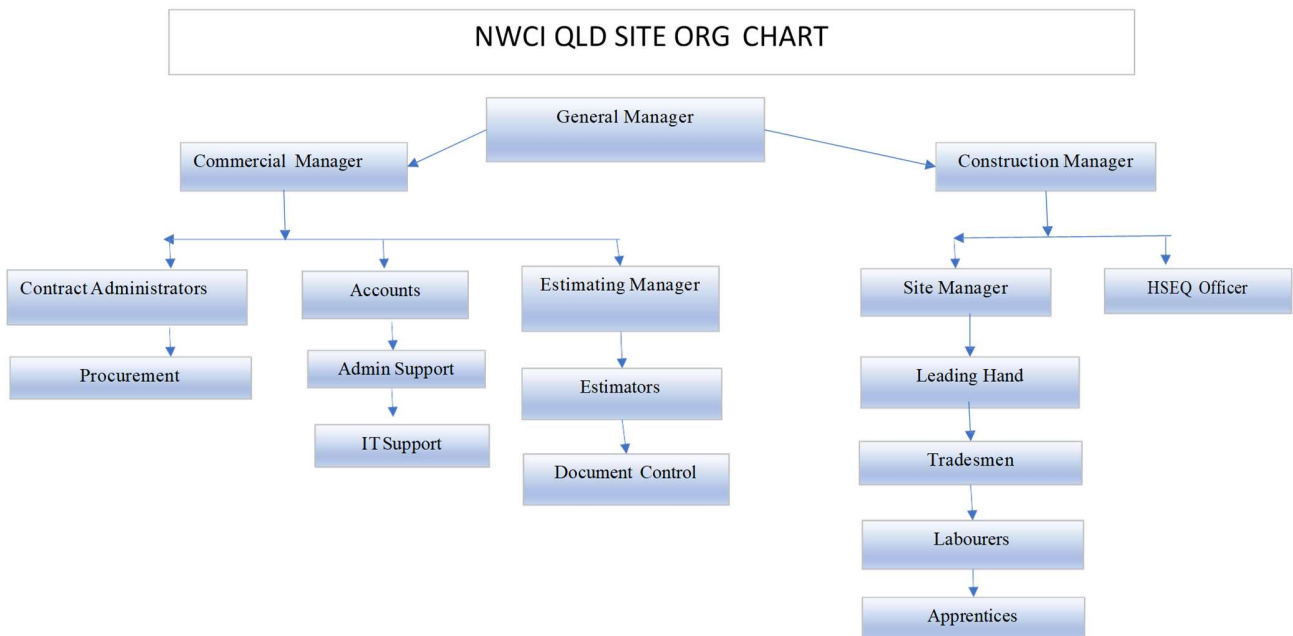
Integrated Management System

NWCI have created our own Management System that combines Health & Safety, Environment, & Quality into one integrated system.

We believe in the quality of our people and invest in our systems, processes, & training of our employees, by encouraging a culture of personal responsibility and continuous improvement, we aim to exceed our client's expectations by maintaining the highest quality & safety standards across all levels of our business.

Organisation Structure

NWCI have an established team of professionals, drawing from available resources NWCI can carry out construction works meeting client contract requirements. NWCI reporting lines are demonstrated in the NWCI organisation chart.



Snapshot

NWCI has been involved in projects throughout Queensland and our proactive team approach to solving issues, quality workmanship and achieving tight deadlines has been paramount to our success.

